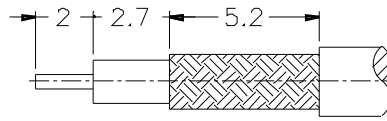
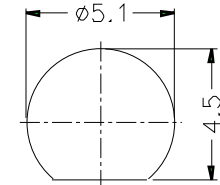


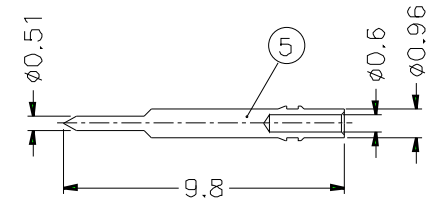
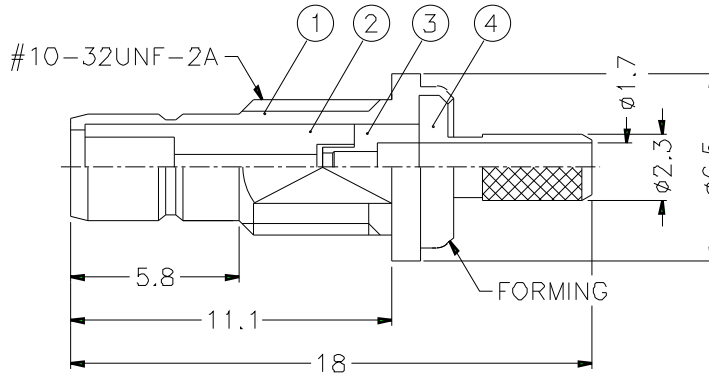
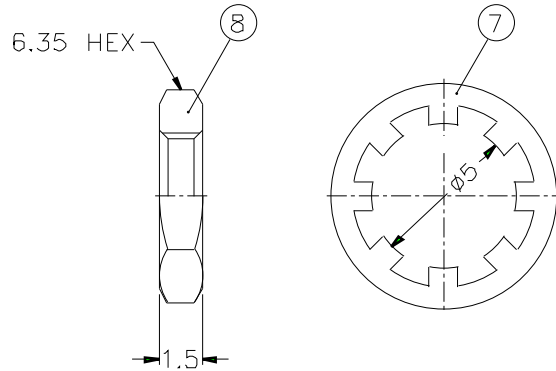
REVISIONS			
ISS	ZONE	DESCRIPTION\PER REQUEST\DATE	



RECOMMENDED
CABLE STRIPPING DIM'S

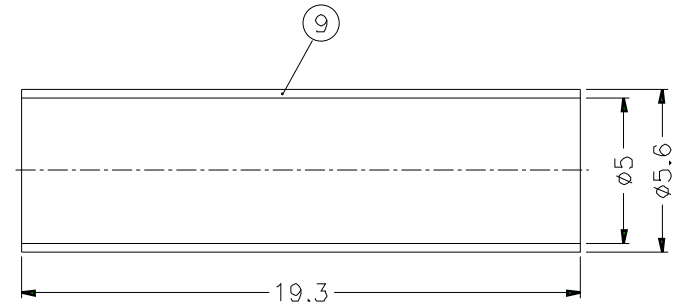
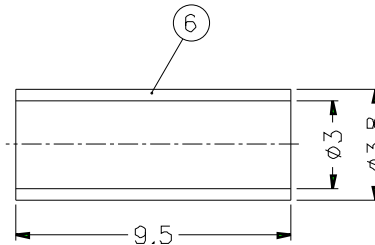


RECOMMENDED
MOUNTING HOLE



1. CRIMPED FERRULE
HEX CRIMP SIZE .128"
2. CRIMPED CONTACT PIN
SQ. CRIMP SIZE (0.7)mm
3. MAX. PANEL THICKNESS=2.4mm

NOTES: FINISH (PLATING THICKNESS IN MICRO-INCHES)
 1. BRASS PER QQ-B-626
 2. BRASS PER QQ-B-613
 3. NICKEL PL. 100 MIN. THICK OVER COPPER STRIKE
 4. GOLD PL. 30 MIN. THICK OVER NICKEL PL. 100 MIN. THICK
 OVER COPPER STRIKE
 5. TEFLON MIL-P-19468



9	HEAT SHRINK TUBING			1	HT-56/5X193
8	HEX NUT	NOTE 1	NOTE 3	1	HN635-10-32X15
7	LOCK WASHER	NOTE 2	NOTE 3	1	LW-78/5X05
6	FERRULE	COPPER	NOTE 3	1	FR-38/3X95C
5	CONTACT PIN	NOTE 1	NOTE 4	1	SMB1421A1-5-096/06
4	BARREL	NOTE 1	NOTE 3	1	SMB6121A1-4-23/17-C
3	INSULATOR	NOTE 5	NATURAL	1	SMB6121B2-3T-50
2	INSULATOR	NOTE 5	NATURAL	1	SMB1421A1-2T-50
1	BODY	NOTE 1	NOTE 3	1	SMB1421A1-1-B
NO.	DESCRIPTION	MATERIAL	FINISH	Q'TY	DRAWING NO.

DIMENSIONS ARE IN MILLIMETERS			PART NO.		
UNLESS OTHERWISE SPECIFIED TOLERANCES 0.5-6 = ±0.2 6-30 = ±0.4 30-120 = ±0.6 120-315 = ±1 315-1000 = ±1.6 1000-2000 = ±2.4			SMB1421A1-002-NT30G-5-50		
			APPROVED	DATE	
			CHECKED	DATE	
			DRAWN	DATE	
SCALE	4/1	ISSUE	A	FILE NO	

Amphenol	
TITLE SMB BULKHEAD CRIMP JACK (FOR RG-174/U,188A/U,316/U)	
DRAWING NO. KJ-SMB1421A1-002-NT30G	
ITEM NO.	